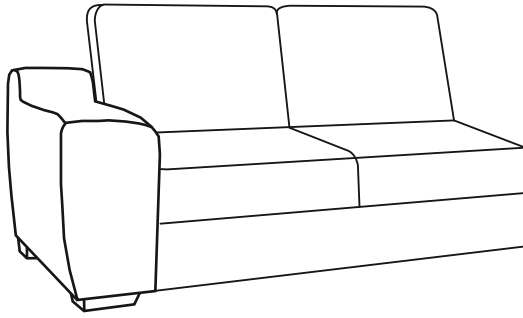

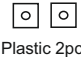


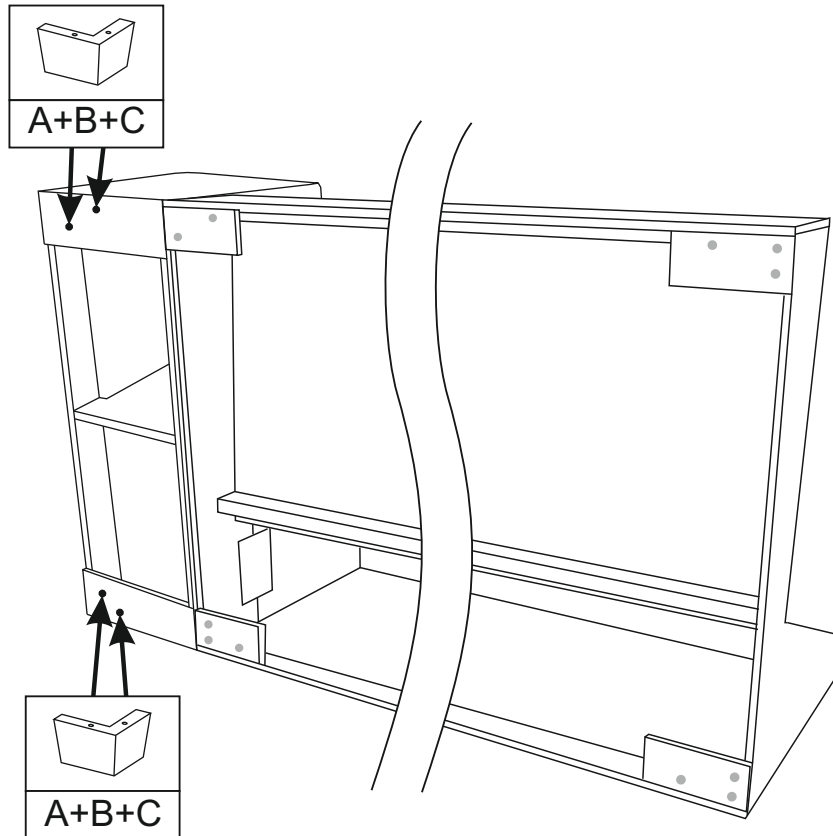


Modular sofa - SEATER + ARMREST



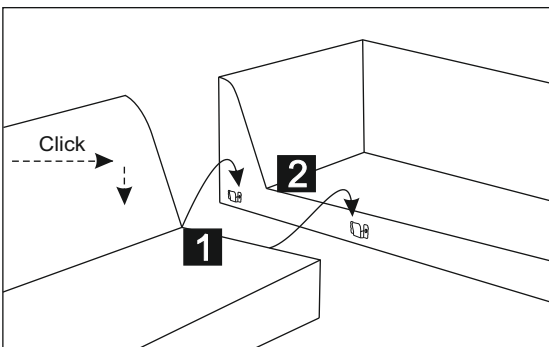
A	 Wood	 Plastic 2pcs.	2 pcs.
B			4 pcs.
C			4 pcs.

I



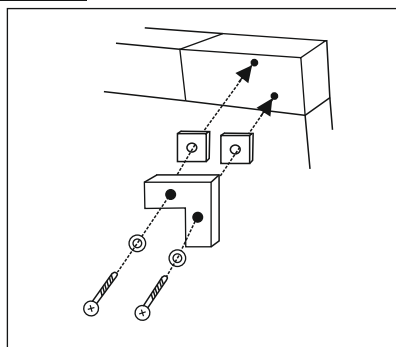
II

Attach parts of the sofa



III

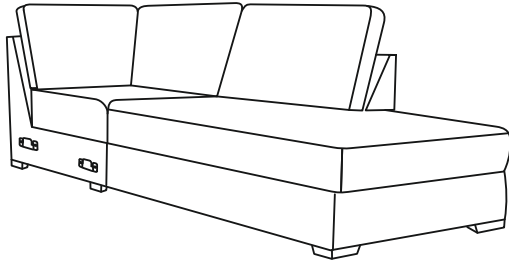
Attach parts of legs.



IMPORTANT While attaching parts make sure hooks No **1** fit with hooks No **2**

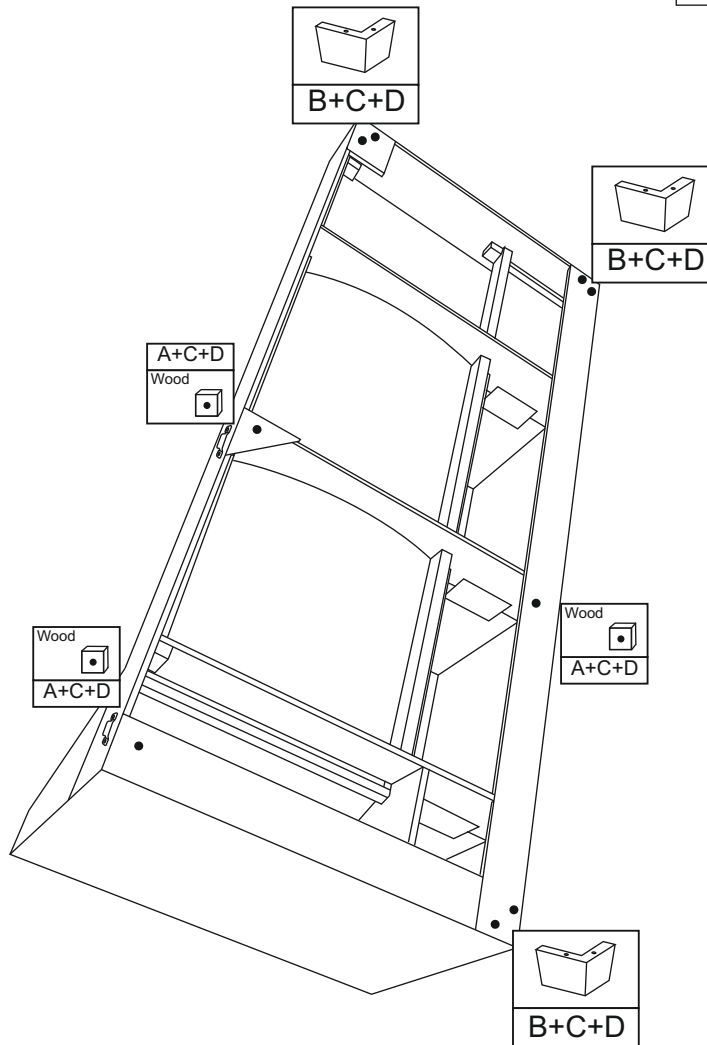
IMPORTANT Package with legs is attached at the bottom of the sofa.

Modular sofa - OPENCORNER



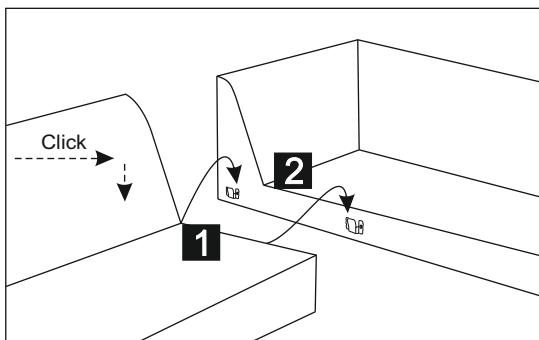
A	Wood	Plastic	3 pcs.
B	Wood	Plastic 2pcs.	3 pcs.
C			9 pcs.
D			9 pcs.

I



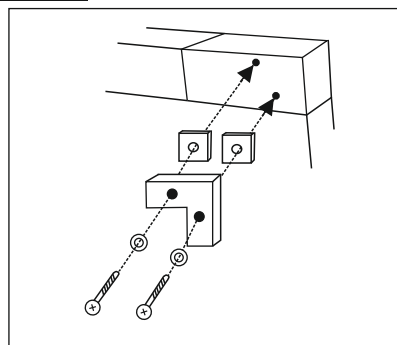
II

Attach parts of the sofa



III

Attach parts of legs.



IMPORTANT While attaching parts make sure hooks No **1** fit with hooks No **2**

IMPORTANT Package with legs is attached at the bottom of the sofa.