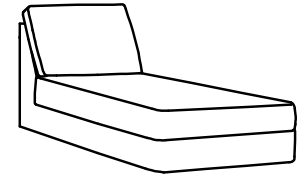


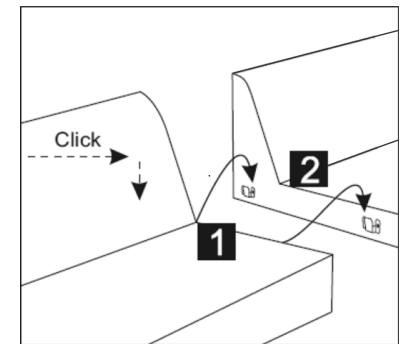
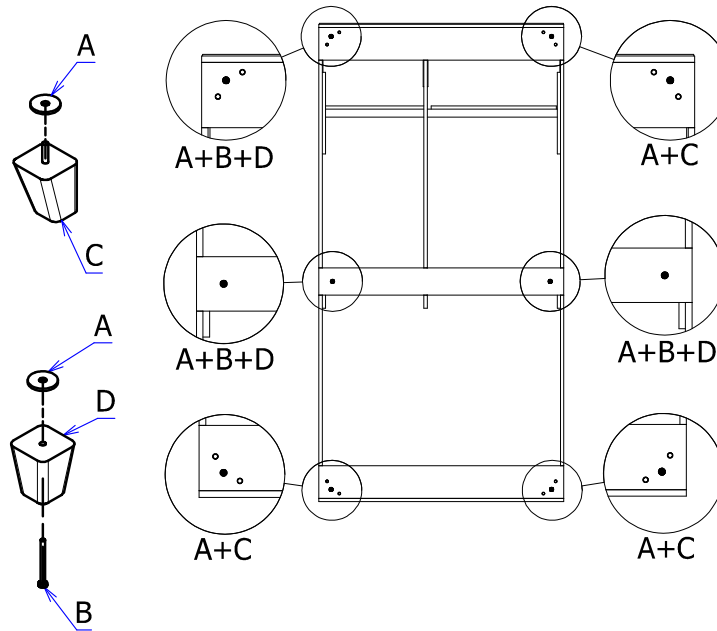
CHAISELONG



MODULAR SOFA



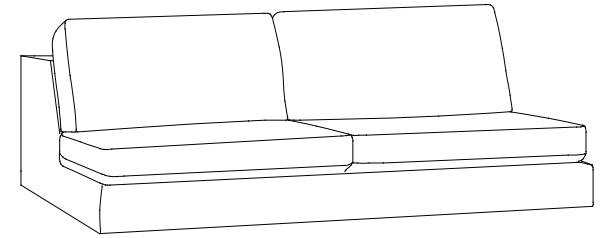
A	6	 Plastic
B	3	
C	3	 No. 441 8 cm
D	3	 No. 442 8 cm



IMPORTANT

The direction in which the hooks are connected, goes from left to right.
 At least two people are necessary to lift the sofa, do not lift the sofa alone or push it.
 It may cause damage in the connecting mechanisms and may create creaking noise in furniture.
 The sofa has to be placed on a flat and leveled surface.
 While attaching parts make sure hooks No. 1 fit with hooks No. 2.

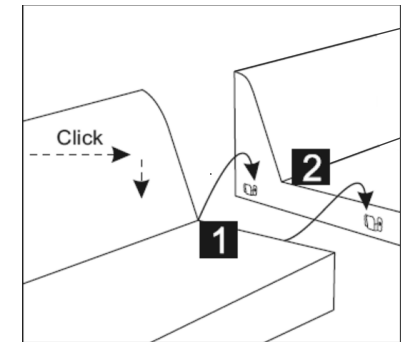
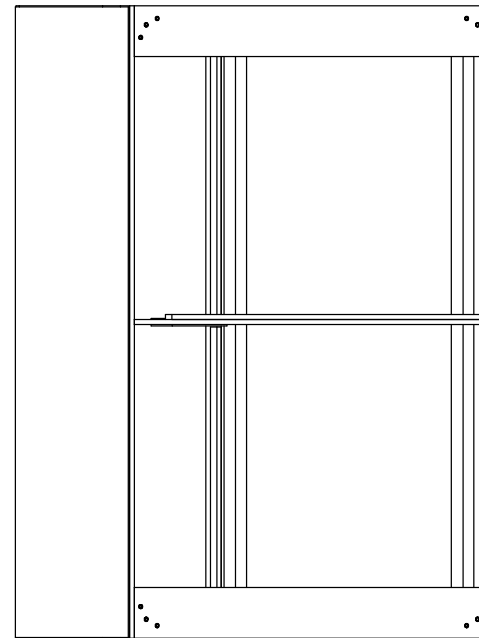
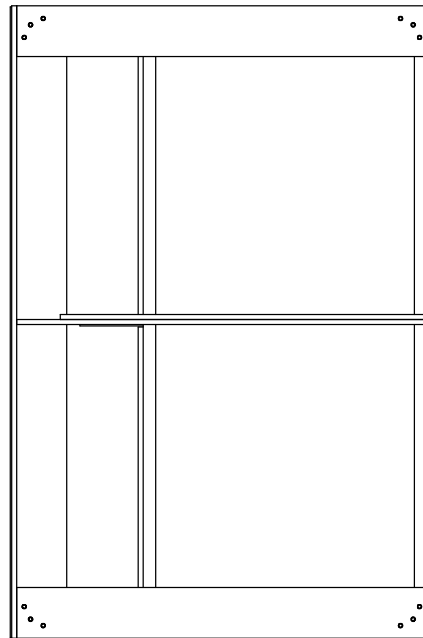
SEATER



MODULAR SOFA



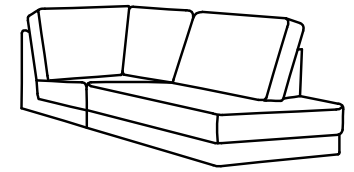
No legs on these parts.



IMPORTANT

The direction in which the hooks are connected, goes from left to right.
At least two people are necessary to lift the sofa, do not lift the sofa alone or push it.
It may cause damage in the connecting mechanisms and may create creaking noise in furniture.
The sofa has to be placed on a flat and leveled surface.
While attaching parts make sure hooks No. 1 fit with hooks No. 2.

OPENCORNER

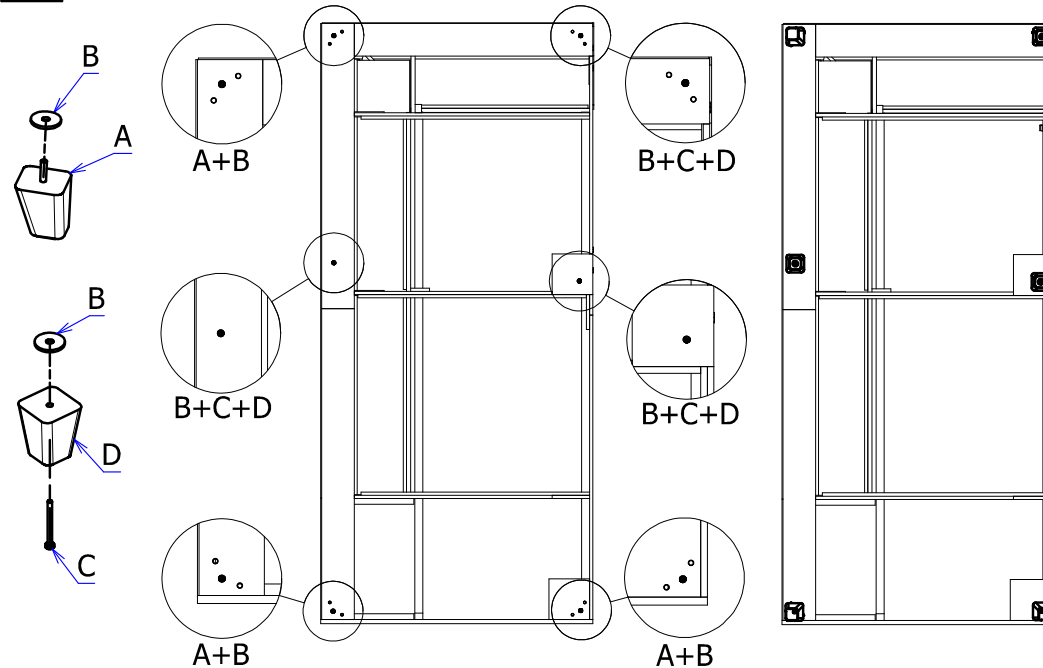


MODULAR SOFA

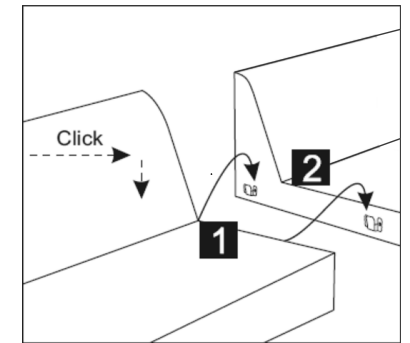
I

A	3	<p>No. 441 8 cm</p>
B	6	<p>Plastic</p>
C	3	
D	3	<p>No. 442 8 cm</p>

II



III



IMPORTANT

The direction in which the hooks are connected, goes from left to right.
 At least two people are necessary to lift the sofa, do not lift the sofa alone or push it.
 It may cause damage in the connecting mechanisms and may create creaking noise in furniture.
 The sofa has to be placed on a flat and leveled surface.
 While attaching parts make sure hooks No. 1 fit with hooks No. 2.